

# Array

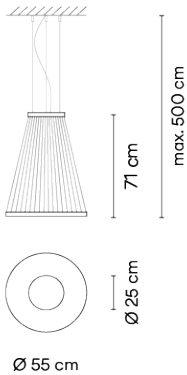
## 1850

VIBIA

Design By Umut Yamac

The Array hanging lamp includes a series of technical filaments pulled taut between two rings where the light rises creating a colour gradient. The conical shape and intimate dimensions make it ideal for small spaces.

### Model Sheet



Optional : Extra cable length

Min. quantity, upcharge and extra lead time apply

Finish	<div><div></div>47 Green L1 NCS S 4005-G80Y</div> <div><div></div>37 Terra Red NCS S 4040-Y70R</div> <div><div></div>24 Beige M1 NCS S 2005-Y50R</div>
LED	2700 K
Dimming	1-10V / Casambi / Push; DALI
Installation type	Remote Micro / Surface Canopy / Built-in S
	<div>D</div>
LED	CRI>90 3993 lm 121 2700 K
Driver	Constant Voltage 90~305 V V 50~60 Hz HZ <div>Dimmable IP20 Multi-volt 50-60Hz</div>
Application	Hanging lamps
Packaging	1 Box 0.12 m x 0.62 m x 0.62 m Gross weight 7.9 Net weight 5.7 Vol. 0.0461

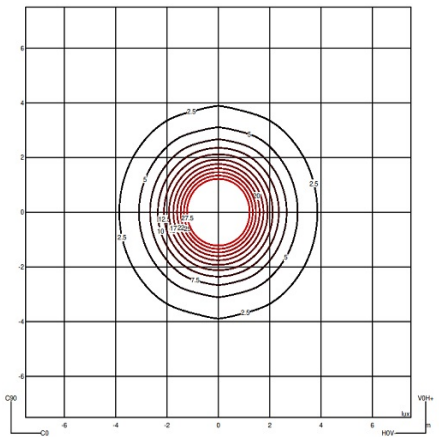
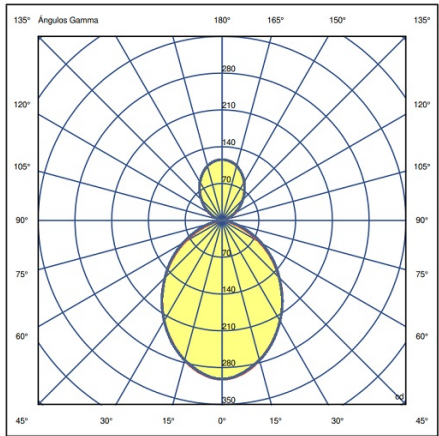
#### Lighting effect

##### Volumetric Diffuser

Subtly directed, diffused light that generates a soft hierarchy of light on to the illuminated surface



#### Photometric Data



Efficiency	26.935 lm/W
Coordinate System	CG
Total Flux	593 lm
Maximum Value	201.28 cd

All of our products come with a five-year warranty. Check our legal terms at [www.vibia.com/warranty](http://www.vibia.com/warranty)

Vibia Lighting, S.L.U.

Office / Oficina  
Progrés 4-6, 08850 Gavà. Barcelona, Spain.

International T +34 934 796 971  
Spain / Portugal T +34 934 796 970

[customer.service@vibia.com](mailto:customer.service@vibia.com)  
[vibia.com](http://vibia.com)