

Flat

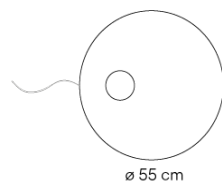
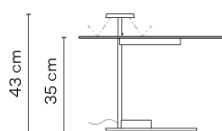
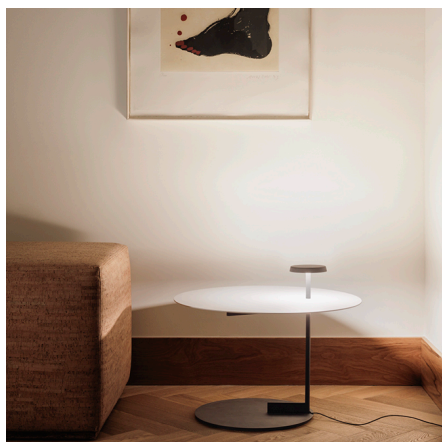
5950

Design By Ichiro Iwasaki

VIBIA

The Flat floor lamp offers multiple functionality; material and light are integrated in a single body. The Flat collection contains various planes of light that rise up to become self-illuminating supports.

Model Sheet



Finish 10 White
NCS S 0300-N

LED 2700 K / 3500 K

Dimming Push

Installation type Plug-in

LED CRI>90 1200 lm 171.4
2700 K / 3500 K

Driver Constant Current 400 100~240 V V
50~60 Hz HZ

Application Floor and Table Lamps

Packaging 1 Box
0.72 m x 0.72 m x 0.5 m
Gross weight 14.6
Net weight 12.71
Vol. 0.2592

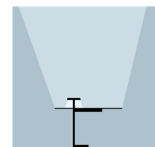
F

☐ F ☒ Dimmer LED IP20 Bi-volt 50-60Hz

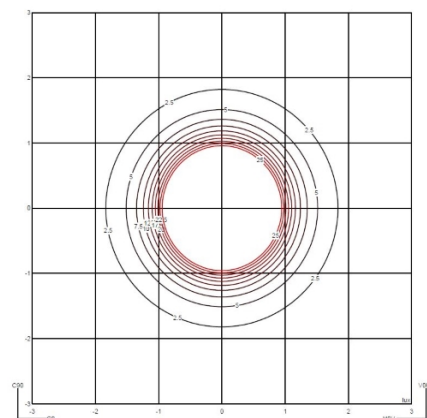
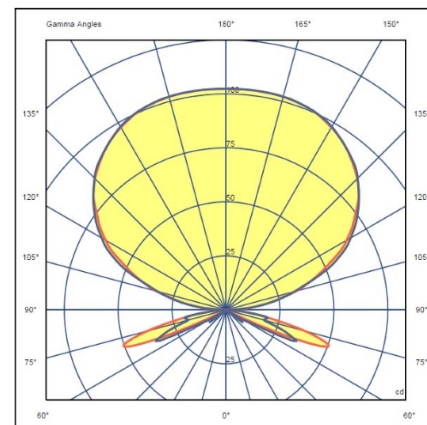
Lighting effect

Reflected

Creation of visual hierarchies within the luminaire itself, emphasising the materiality and texture of the



Photometric Data



Efficiency 51.15 lm/W
Coordinate System CG
Total Flux 455.40 lm
Maximum Value 102.48 cd

Min. quantity, upcharge and extra lead time apply

All of our products come with a five-year warranty. Check our legal terms at www.vibia.com/warranty

Vibia Lighting, S.L.U.

Office / Oficina
Progrés 4-6, 08850 Gavà, Barcelona, Spain.

International T +34 934 796 971
Spain / Portugal T +34 934 796 970

customer.service@vibia.com
vibia.com